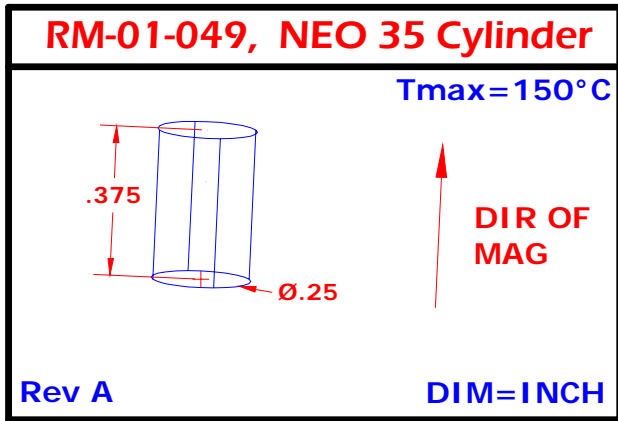
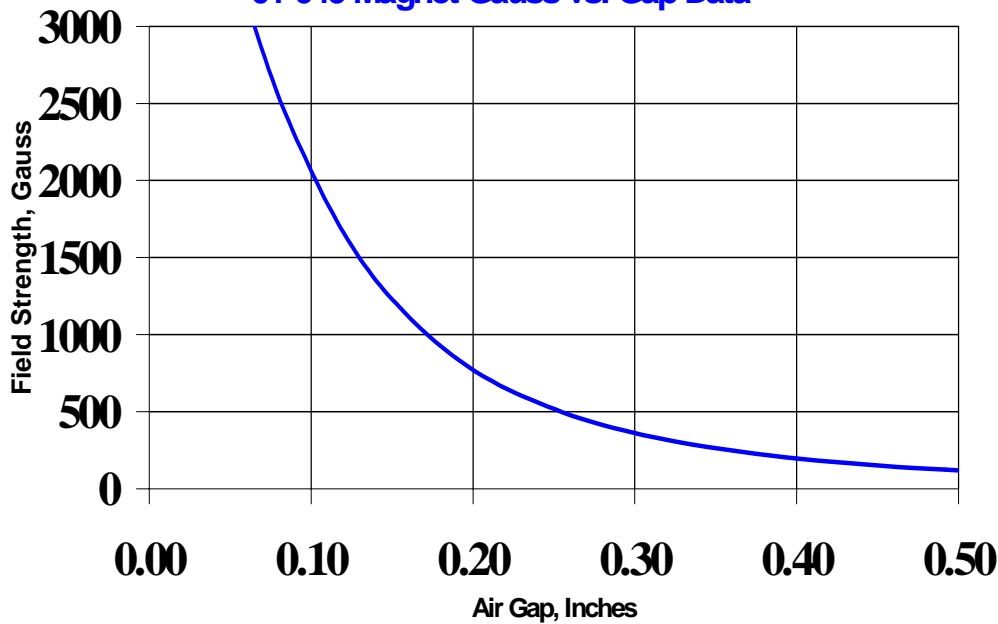


RM-01-049 Magnet, NEO 35H, Rect, .750x.250x.375 with slot, Ni, S-Pole Marked



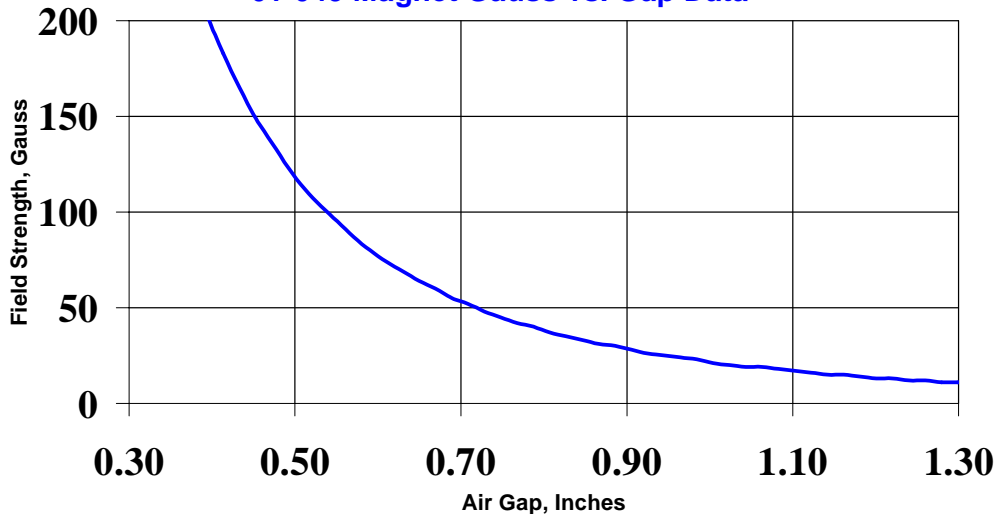
300-01-049 NEO 35 SH MATERIAL SPECS(25°C):	TYPICAL:	MINIMUM:
PROCESSING TYPE:	SINTERED	
BR GAUSS:	12000	11700
HC OERSTED:	11500	11000
HCI OERSTED:	20000	21000
BHMAX MGOE:	35	33
BR TEMP CO (%/°C):	-0.10	
RECOIL PERM. (UREC):	.19%	
TC CURIE TEMP (°C):	310	
MAX OPERATING TEMP (°C):	150	
Rev 1 PLATING, NI (MILS):	0.6	0.4

01-049 Magnet Gauss vs. Gap Data



Close Gap Data

01-049 Magnet Gauss vs. Gap Data



Far Gap Data