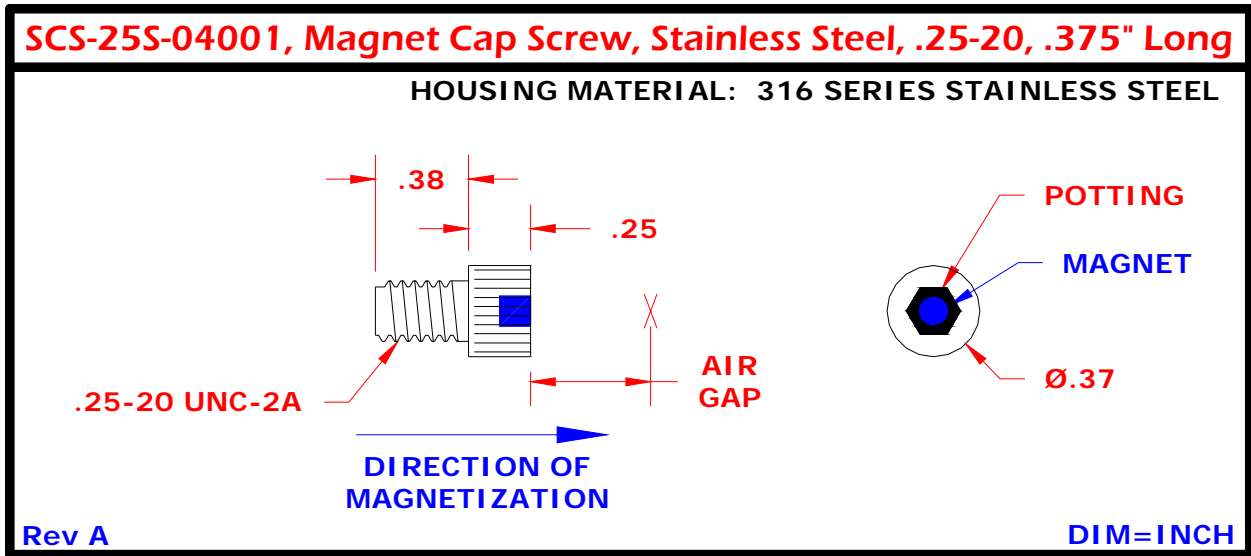


PM-SCS25S-04001S Potted Magnet, Socket Cap Screw 1/4-20 x .375" long, 316 Stainless Steel with SmCo 26 Cylinder, 0.125 diam x 0.125 long, S Pole Field



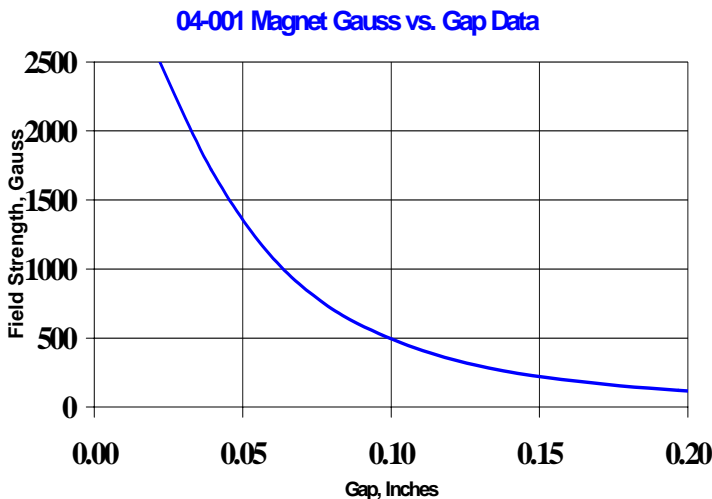
Magnet Specifications

300-04-001 SMCO 26		
MATERIAL SPECS(25°C):	TYPICAL:	MINIMUM:
PROCESSING TYPE:	SINTERED	
BR GAUSS:	10600	10200
HC OERSTED:	10100	9100
HCI OERSTED:	20000	18000
BHMAX MGOE:	26	24
BR TEMP CO (%/°C):	-0.03	
RECOIL PERM. (UREC):		
TC CURIE TEMP (°C):	800	
MAX OPERATING TEMP (°C):	350	
Rev A	PLATING:	NONE

ENVIRONMENTAL	Specifications	S25A
Corrosion Resistance	100 hours salt spray	ASTM B-117
Installation Torque	30 Foot-Pounds Maximum	
Enclosure	Nema 1,3,4,6,13 & IEC IP67	
Vibration	10G 2 to 2000 Hz. Continuous	
Mechanical Shock	100 G, 11 ms	
	preliminary	

PM- is a potted magnet. The part number is PM-HHHH-MMMMMP where HHHH is the Housing code, MMMMM is the part number of the magnet, and P is the Magnet's Pole that exits the housing (S for South pole, N for North).

FIELD STRENGTH CLOSE TO MAGNET



FIELD STRENGTH FAR FROM MAGNET

